

03/2025 S210LRGB251S00

Due to our policy of constant technological upgrading, the technical specifications may be subject to change without prior notice.
According to the standards in force, in non-EU areas the availability and specifications of some products and/or features may vary. Please contact your local distributor for further information.



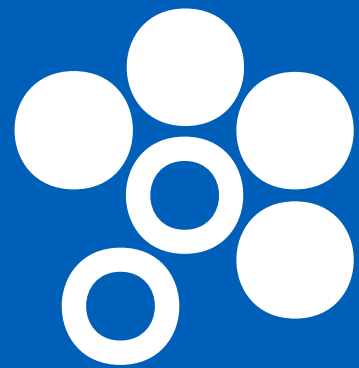
BU Medical Equipment
Sede Legale ed Amministrativa / Headquarters
CEFLA s.c.
Via Selice Provinciale, 23/a
40026 Imola (BO) - Italy
t. +39 0542 653111
f. +39 0542 653344
sternweber.com

Stabilimento / Plant
Via Bicocca, 14/C
40026 Imola (BO) - Italy
t. +39 0542 653441
f. +39 0542 653601



S210LR
THE VALUE OF VERSATILITY

STERNWEBER.COM



STERN WEBER

MAXIMUM FLEXIBILITY

Adaptability for left-handed dentists through easy re-positioning; also ensures suitability for all clinical facilities. The S210LR responds to the growing need for flexible, compact equipment that can be used by dentists who practice in hospitals or multi-user surgeries.

LIMITLESS CHOICE

Part of a wide range that spans from integral to modular versions, this model can be configured so it matches customer needs precisely. Ranges from the patient chair only and extends all the way to the complete version with unit body, dentist and assistant's modules, foot control and operating light.

INSPIRED BY EVOLUTION

Advanced functions, control software for cutting-edge instruments and hygiene devices, all operated via an advanced control panel with LCD touchscreen. Thanks to in-depth data and dedicated functions, dentists can also perform root canal treatment. With S210LR, tomorrow comes closer.

YOUR TALENT INSPIRES US









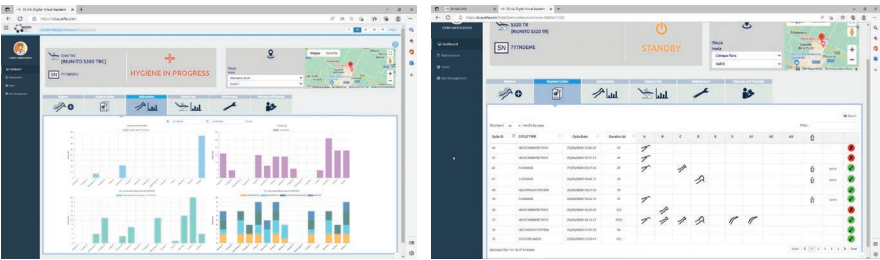


To keep pace with technological developments, the Stern Weber product range features Internet connectivity. This latest innovation provides access to optional digital services that improve dental surgery efficiency.

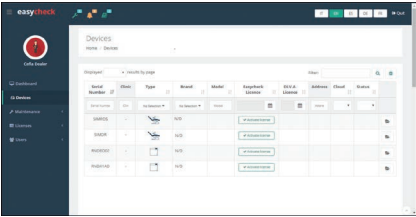
Di.V.A. (Digital Virtual Assistant)

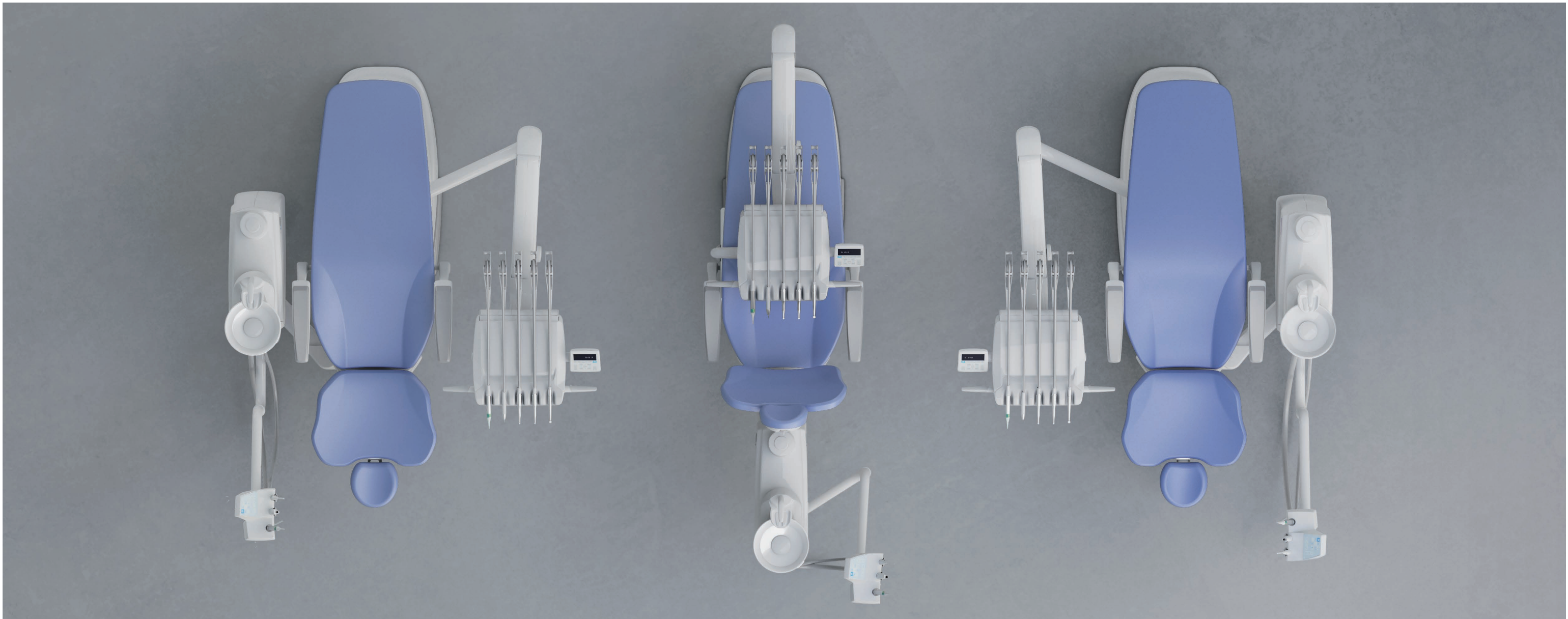
With Di.V.A., a user-friendly dashboard lets dentists or surgery owners monitor dental unit use, instrumentation and the disinfection cycles performed. Data can be obtained quickly and easily as it's managed on a web portal, accessible from any browser.

Where a patient sensor is present, users can accurately quantify effective use of the patient chair. What's more, Di.V.A. gives direct access to video tutorials and the user manual for the model in question.



When linked to the web via EasyCheck, the dental unit can rely on real-time remote diagnosis and technical support: this valuable tool helps technicians speed up assistance and manage it more effectively.





Fully re-positionable without
any need for technical
adjustments

Ideal for multi-operator surgeries where both right-handed and left-handed dentists practice, the S210LR can be re-positioned in just a few quick, simple steps that require neither tools nor technicians. The switch can even be made by the assistant on his/her own.

The dentist's module rotates on the fixed pin under the seat; the unit body - arm and assistant's module included - can be moved from one side to the other after releasing the support.



Support release
Once the cover has been removed just free the mechanism that allows re-positioning from right to left and vice versa.



Re-positionable control panel
Continental model users can move the control panel to the opposite side of the dentist's module, thus optimising ergonomics and making the dental unit 100% ambidextrous. Just rotate the on-panel connector 180° and reconnect it to the tablet. The task takes less than a minute.





A unit designed to maximise flexibility in every situation

Everything on the Continental model has been designed to provide the dentist with an extremely flexible system. From the compactness and lightness of the dentist's module to the swing joints that allow instrument levers to move laterally without causing wrist fatigue, every single ergonomic aspect is designed to optimise mobility. The dentist's module is light and compact. Instruments are easy to use thanks to generous tubing excursion and a tubing recovery arm system minimises interference with the operating light. The handle incorporates a pushbutton to release the pneumatic lock on the module,

helping the dentist position it perfectly after vertical adjustment. All this ensures the dentist can always count on perfectly positioned instruments and, therefore, maximum working comfort.



Orthodontic arm
Model designed for orthodontists with single chair. The arm complements the module with 5 holders, 2 of which are for dynamic instruments (to be chosen



from micromotor, scaler, and turbine). The control panel with alphanumeric display manages the chair, lamp and instruments.



Compact tray
The stainless steel tray is conveniently housed under the module. Position-adjustable, it can easily be used by either dentist or assistant. A compact tray of minimum size and bulk is available as an alternative.



SideFlex instrument levers
Removable and equipped with swing joints that also allow lateral movement, the levers alleviate wrist fatigue and are self-balancing. SideFlex instrument levers are available as an optional.



**Extensive, fluid movement
ensures working comfort in
every position**

Thanks to the broader arm system on the hanging-tube instruments model, the dentist's module can reach all the usual working positions around the patient. Made of light cast aluminium, the fixed arm can pass over the patient whatever the situation. A broad handle running the full width of the module makes module movement even easier. The handle can be removed for cleaning purposes. When placed in their holders, instruments are supported securely and arranged symmetrically to optimise ergonomics.

A large easy-to-read LCD touch screen is positioned above the instruments. Dentists

can control patient chair movements, hygiene systems and other integrated devices. Where the i-XS4 micromotor is available the instrument control panel also provides complete endodontic functions (including control of the apex locator, with data display during canal treatment).



Tray holder
Optional large transthoracic tray holder mounted on the International module.



Sixth instrument
The international dentist's module can be completed with an optional sixth instrument: camera or T-LED light.



Assistant's module
The module mounted on the double-articulated arm is height-adjustable and comes with three holders as standard. An optional 5-holder version can be used to hold other instruments such as a camera or T-LED light. The keypad incorporates controls that move the patient chair, switch on the operating light and operate the water-to-cup and cuspidor bowl rinse functions.



**Instruments and software
for endodontics
and the new FLUO
micromotors**

The S210LR provides everything needed for endodontic treatment: instruments, the specific contra-angle to be used with the optional i-XS4 micromotor, electronics for precise control and adjustment of operating parameters (speed and torque). Lighter and quieter than previous versions, the new brushless micromotors are now available with innovative FIT (Fluorescence-aided Identification Technique) technology. This identifies the presence of composite materials thanks to the fluorescence emitted by a LED integrated in the instrument.



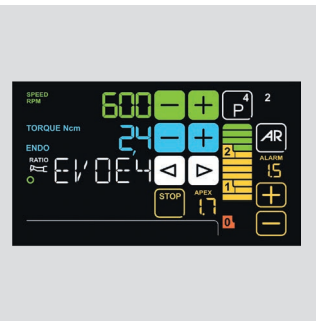
i-XS4 micromotor
Supplied as an alternative to the i-XR3 LED micromotor, the i-XS4 is suitable for conservative, prosthetic and endodontic dentistry. Speed ranges from 100 to 40,000 rpm and torque is adjustable. It features auto-forward and auto-reverse functions and is fully autoclavable.



SC Scalars
Ultrasound scalars, compatible with the best commercially available tips, for supragingival prophylaxis and periodontal tasks. Also suitable for the preparation of small cavities and usable in endodontic root canal cleaning techniques. Available with or without LED lighting.



T-LED
T-LED has an emission spectrum for activation of the latest-generation composites. It features a swivel grip and a user-friendly interface. The bracket programme - one of the seven available - consists of 5 brief rapid-succession emissions.



Apex locator
It allows the apex distance to be displayed during root canal instrumentation. The nearing of the apex is also indicated by warning buzzers and micromotor rotation is automatically disabled when the apex is reached.



Excellent comfort and
outstanding style

Featuring new optional swivel arms, the slim-profile patient chair incorporates a movement control keypad on the side of the seat. Made of tough materials and featuring thoroughly tested mechanics, the patient chair offers excellent support and has a lift capacity of 160 kg.

Completely silent

The patient chair is equipped with Soft-Motion technology, which ensures both silent running and fluid, vibration-free movement.



Patient presence sensor
The automatic operating light switch-on/off mechanism - which can be enabled during installation or by the technical service - helps make the dental unit more sustainable.



Memory Foam
Exceptional comfort and proper anatomical support thanks to special upholstery options.



Standard backrest
Shaped so that dental staff can move closer to the patient during treatment. Suitable for adults, children and any treatment type.



Nordic backrest
Ensures lasting comfort during longer treatment sessions and is shaped to aid dentists working in 'indirect vision' mode.



Atlaxis headrest
The headrest that faithfully follows the patient's anatomy. Ultra-simple fingertip release of the pneumatic lock allows orbital movement to achieve perfect positioning, vertical adjustment included.



Venus LED MCT - Venus LED MCT View

The Venus LED MCT lamp rotates on three axes to ensure perfect lighting of the operating field whatever the task or position. The No Touch sensor can switch the lamp on/off and adjust light intensity up to 50,000 Lux.

The innovative system makes it possible to provide just the right light for every clinical discipline, with 3 different temperature values: warm (4,300 K), neutral (5,000 K) or cool (5,500 K) light.

Absolute colour fidelity thanks to a rendering that scores more than 95 on the Colour Rendering Index (CRI, scale 0-100).

This feature changes the light wavelength to prevent the pre-curing of composite materials while ensuring optimum lighting of the operating field.

The Venus LED MCT View combines a 4K camera with PC software to capture ultra-high-definition images and videos.

The Smart Focus system features liquid lenses, ensuring fast, optimal digital focusing. In addition to smoothing practitioner-patient communication, the camera is also, thanks to recordings and multimedia streaming, a useful aid for clinical training, treatment documentation and academic disclosure.

The Venus LED MCT View with integrated 4K camera is a powerful tool for sharing clinical information with patients to aid their understanding of treatment.

Venus Plus SCT - Venus Plus SCT Composite

Supplied as standard, the Venus Plus SCT is a LED operating light equipped with 4 light sources. Its high Colour Rendering Index (>90) delivers realistic, natural colour perception. Brightness can be adjusted from 3,000 to 50,000 Lux and, thanks to the large spot-lit area, optimises illumination of the oral cavity without generating annoying shadows.

Removable handles for sterilisation; also equipped with an infrared sensor for switching on/off/adjusting intensity.

On the Venus Plus SCT Composite version there are - in addition to the four light sources - two central sources that generate a beam with specific wavelengths: these prevent pre-polymerisation of composites while ensuring excellent illumination of the oral cavity.



**Live image sharing
enhances patient confidence**

Coupled with a latest-generation HD camera, the Full HD 16: 9 medical flat-screen, tilt-adjustable monitor, resolution 1920 x 1080 pixels, with IPS control panel can be connected via cable to a PC. The LED light sources ensure high levels of contrast and brightness, while the IPS panel, which significantly broadens the screen viewing range, allows images to be comfortably viewed from any angle.



22" LED Monitor
The Full HD medical monitor is also available in a multitouch version that allows the screen to be positioned as desired.



C-U2 HD camera
The camera aids dentist-patient communication and, thanks to the slender handpiece design, it can reach distal zones with ease. Excellent depth of field eliminates any need for manual focusing. Speeds up diagnostics and generates material for documenting the treatment and completing clinical reports.



Macro Cap
An extremely useful accessory, Macro Cap can magnify up to 100x in ultra-high resolution. Three additional, high purity glass lenses optimise the lighting of details located close to the optical unit.



Zen-X X-ray sensor
Extractable sensor with USB lead located on the dentist's module, can capture high-resolution images with minimal radiation dosage. Able to be sanitised, the sensor comes in two different sizes and is IP67 certified against water and dust infiltration.



The instruments are inserted in the tray above the cuspidor bowl throughout the **BIOSTER** cycle.

Meticulous design and certified devices ensure protection you can always count on

Free to configure the dental unit with a broad selection of active devices as desired, dentists can also count on a design concept with an array of features that safeguard patient and surgery staff alike.



I.W.F.C.
Activated via the control panel, the device ensures tubing is kept clean after the machine has been idle for some time.
Included in the **BIOSTER** system or available separately.

BIOSTER
S210LR can be equipped with the automatic **BIOSTER** system. This device performs fast, intensive disinfection cycles on spray water circuits. Each stage of the cycle is automatically controlled by the dental unit. Dentists can personalise settings as desired.
The cycle stages are:

- Emptying of water in the ducts by introducing compressed air
- Withdrawal of disinfectant from tank and its introduction into the spray circuits
- Liquid remains in ducts for indicated time
- Liquid expelled with compressed air
- Flushing with (mains or distilled) water

By using Peroxy Ag+, the **BIOSTER** ensures high-level disinfection of the water circuit. Analysis carried out by the **Sapienza University of Rome** has demonstrated that the disinfection provided is sufficient to "eradicate all tested microbes from the piping of the dental unit, even with higher contamination levels."



Cuspidor bowl with optical sensor
The glass cuspidor bowl rotates and can be removed for cleaning purposes. Incorporated in the cup and bowl fill unit, the optical sensor automates cup filling.



A.C.V.S.
Automatic system that carries out suction system sanitisation cycles between one patient and another. Practical and fast.



DVGW CERTIFICATE
The dental unit water circuit is EN 1717 compliant.



SANASPRAY
Tank with distilled water as an alternative to mains water.



Removable International handle
The handle can be removed for in-depth sanitisation; removal also makes it easier to clean the dentist's module and instrument control panel.



Removable Continental handle
The new dentist's module handle can easily be removed for thorough sanitisation.

STANDARD	198 Atlantic Blue 106 Mediterranean Blue 196 Pacific Blue 106 Indian Blue 183 Blueberry Violet 183 Japanese Wisteria 183 Venetian Red	186 Scottish Salmon 136 Nevada Yellow 136 Polyesian Green 192 Caribbean Green 132 Bright Silver 121 Anthracite Grey 130 Graphite Black	194 Anatolian Hazelnut 141 Papyrus Beige 143 Arabian Gold 140 Brazilian Brown 144 Ruby Red	MEMORY FOAM	198 Atlantic Blue 196 Mediterranean Blue 183 Pacific Blue 186 Indian Blue 192 Blueberry Violet 184 Japanese Wisteria 194 Venetian Red	195 Scottish Salmon 182 Nevada Yellow 193 Polyesian Green 197 Caribbean Green 187 Bright Silver 199 Anthracite Grey 180 Graphite Black	172 Anatolian Hazelnut 171 Papyrus Beige 173 Arabian Gold 170 Brazilian Brown 174 Ruby Red
-----------------	---	--	--	--------------------	---	--	--

CART

